



**MITE 71**  
**High Pass or Low Pass**  
**Pneumatic Selecting Relay**

---

- Factory setting for “**HIGH**” or “**LOW**” selector is indicated by “**H**” or “**L**” stamped on body.
- Instrument input is at ports “**A**” and “**B**”. Selected signal appears at port “**C**”.

### **INSTRUCTIONS FOR CONVERTING SETTINGS**

#### **A. To convert unit to “HIGH” settings:**

1. Remove 6 cap screws. Separate upper and lower cases.
2. Place the two O-rings, one on either side of diaphragm, into the inside grooves adjacent to the diaphragm. Reassemble.
3. Plug port “**C**”. Apply pressure, not over 5 psig, to port “**A**”. Tighten adjusting screw on side “**B**” until port “**B**” starts to leak. Then loosen adjusting screw slowly until leakage stops.
4. Apply not over 5 psig to port “**B**”. Tighten adjusting screw on side “**A**” until port “**A**” starts to leak. Then loosen adjusting screw slowly until leakage stops.

#### **B. To convert unit to “LOW” settings:**

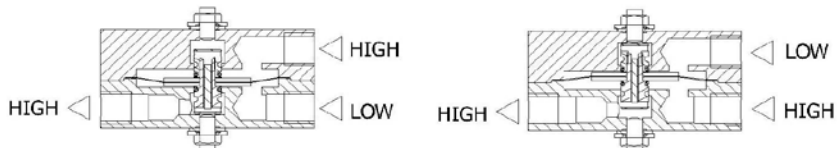
1. Remove 6 cap screws. Separate upper and lower cases.
2. Place the two O-rings, one on either side of diaphragm, into the outside grooves away from the diaphragm. Reassemble.
3. Apply pressure, not over 5 psig, to port “**A**”. Tighten adjusting screw on side “**B**” until port “**B**” and/or “**C**” starts to leak. Then loosen adjusting screw slowly until leakage stops.
4. Apply not over 5 psig to port “**B**”. Tighten adjusting screw on side “**A**” until port “**A**” and/or “**C**” starts to leak. Then loosen adjusting screw slowly until leakage stops.

### **LIMITED WARRANTY & DISCLAIMER**

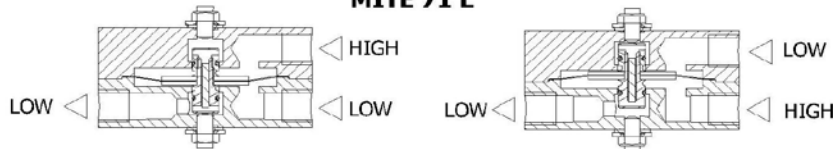
ControlAir LLC products are warranted to be free from defects in materials and workmanship for a period of eighteen months from the date of sale, provided said products are used according to ControlAir LLC recommended usages. ControlAir LLC's liability is limited to the repair, purchase price refund, or replacement in kind, at ControlAir LLC's sole option, of any products proved defective. ControlAir LLC reserves the right to discontinue manufacture of any products or change products materials, designs or specifications without notice. Note: ControlAir does not assume responsibility for the selection, use, or maintenance of any product. Responsibility for the proper selection, use, and maintenance of any ControlAir product remains solely with the purchaser and end user.

# FLOW SCHEMATIC

## MITE 71 H



## MITE 71 L



### NOTES:

1. PRESSURE RATING: 100 PSIG (689 KPa)
2. TEMPERATURE RATING:  
-40° F TO 180° F (-40° C TO 82.2° C)

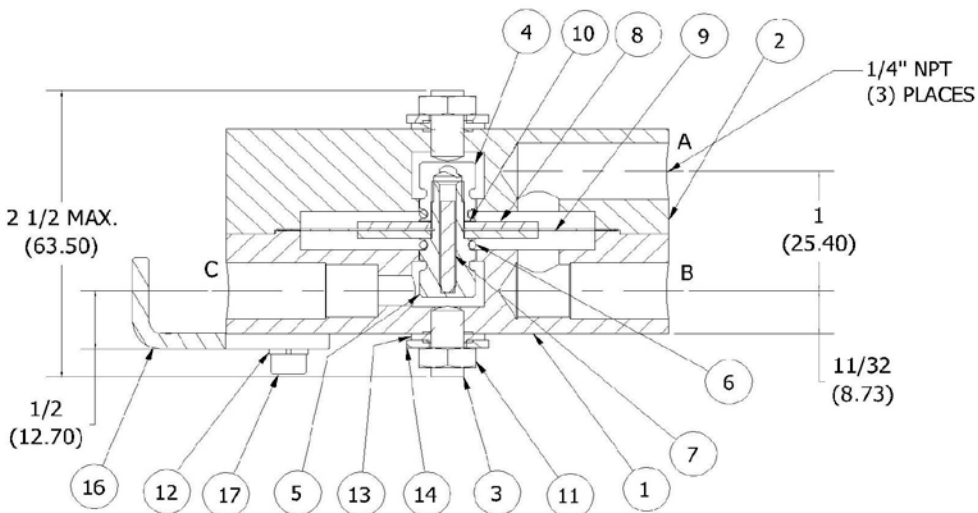
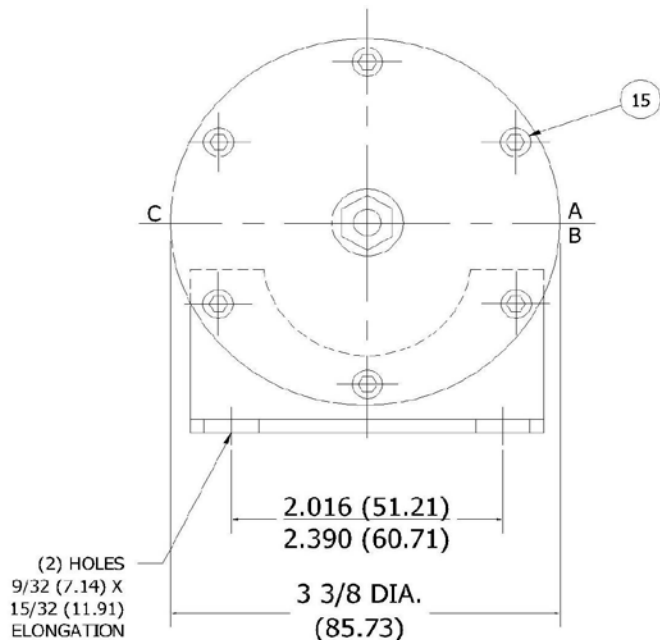
### \* RECOMENDED SPARE PARTS

Parts List			
ITEM	QTY	PART NUMBER	DESCRIPTION
1	1	742-714-028	UPPER COVER
2	1	742-714-026	LOWER COVER
3	2	745-748-179	HEX SOCKET SET SCREW
4	1	742-907-002	SPOOL
5	1	742-907-004	SPOOL ADAPTOR
6	2	745-749-061	O-RING
7	1	746-735-017	PIN
8	2	747-719-024	DISC
9*	1	746-700-099	DIAPHRAGM
10*	1	746-724-024	GASKET
11	2	745-734-059	LOCK NUT
12	2	746-755-136	LOCK WASHER
13	2	745-762-067	SEALING WASHER
14	2	745-762-066	PLAIN WASHER
15	4	745-748-177	CAP SCREW 1"
16	1	736-707-059	BRACKET
17	2	745-748-178	CAP SCREW 1.25"

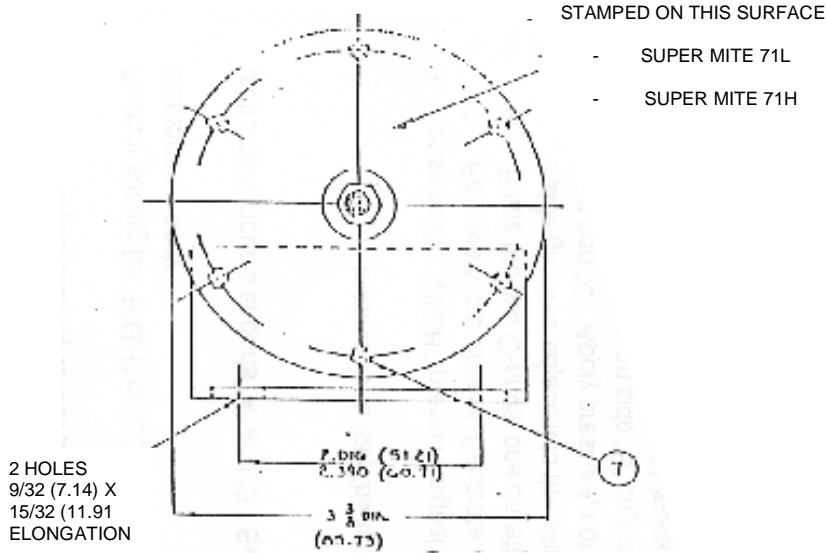
THIS DRAWING AND THE INFORMATION IT DISCLOSES ARE CONFIDENTIAL PROPERTY OF CONTROLAIR INC. AND MAY NOT BE USED, COPIED, REPRODUCED, PUBLISHED OR DISCLOSED TO OTHERS WITHOUT WRITTEN AUTHORIZATION OF CONTROLAIR INC.

TOLERANCES	REVISIONS			ControlAir Inc.		8 COLUMBIA DRIVE ANNISTON, AL 35611 USA	
DIMENSION XXX .005 XXXX .0010	NO.	DATE	BY	DATE	SCALE	MATERIAL	SEE NOTES
FRACTIONAL ± 1/16 ANGULAR ± 1/16	1						
FINISH: 32 RMS	2						
THIRD ANGLE PREFERRED	3						
	4						
	5						

DIAPHRAGM OPERATION			
MITE 71			
DRAWN BY	SCALE	MATERIAL	SEE NOTES
JAG			
CHECKED	DATE	DRAWING NO.	
	05-14-13		
TRACED	APPROVED ENGR. REF.	DRAWING NO.	
	9671-02-0000-500	741-622-070	

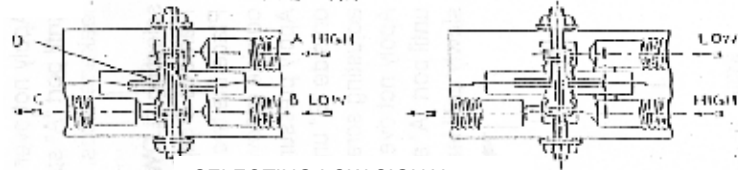


# Installation, Operation, and Maintenance Instructions P200 P/I Transducer

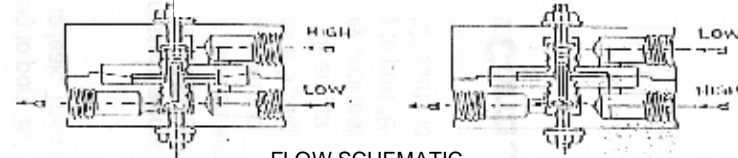


3 3/8"  
(85.73)

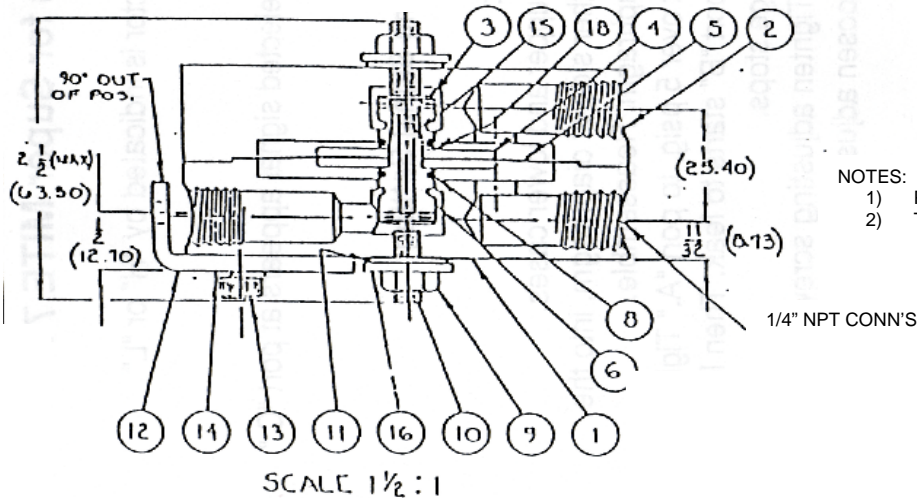
## SELECTING HIGH SIGNAL MITE 71H



## SELECTING LOW SIGNAL MITE 71L



FLOW SCHEMATIC



- NOTES:
- 1) PRESSURE RATING: 100 PSIG
  - 2) TEMPERATURE RATING: 40°F TO + 180°F  
(18.27°C TO 82.2°C)

## RECOMMENDED SPARE PARTS

QTY.	DESCRIPTION	MATERIAL
16	1 GASKET	TFE
16	2 WASHER	ST, ST'L
15	1 PIN	ST, ST'L
14	2 LOCKWASHER	ST, ST'L
13	2 SOX. HD. CAP SCREW	STEEL
12	1 BRACKET	ALUMINUM
11	2 THREDEAL	MISC.
10	2 ADJUSTING SCREW	STEEL
9	2 LOCKNUT	ST, ST'L
8	2 O-RING	BUNA-N
7	4 SOX. HD. CAP SCREW	STEEL
6	1 SPOOL ADAPTOR	ALUMINUM
5	1 DIAPHRAGM	NYL. REIN. NEO
4	2 DIAPHRAGM DISC.	ALUMINUM
3	1 SPOOL	ALUMINUM
2	1 UPPER CASE	ALUMINUM
1	1 LOWER CASE	ALUMINUM

PARTS LIST