



MITE 71
High Pass or Low Pass
Pneumatic Selecting Relay

- Factory setting for “HIGH” or “LOW” selector is indicated by “H” or “L” stamped on body.
- Instrument input is at ports “A” and “B”. Selected signal appears at port “C”.

INSTRUCTIONS FOR CONVERTING SETTINGS

A. To convert unit to “HIGH” settings:

1. Remove 6 cap screws. Separate upper and lower cases.
2. Place the two O-rings, one on either side of diaphragm, into the inside grooves adjacent to the diaphragm. Reassemble.
3. Plug port “C”. Apply pressure, not over 5 psig, to port “A”. Tighten adjusting screw on side “B” until port “B” starts to leak. Then loosen adjusting screw slowly until leakage stops.
4. Apply not over 5 psig to port “B”. Tighten adjusting screw on side “A” until port “A” starts to leak. Then loosen adjusting screw slowly until leakage stops.

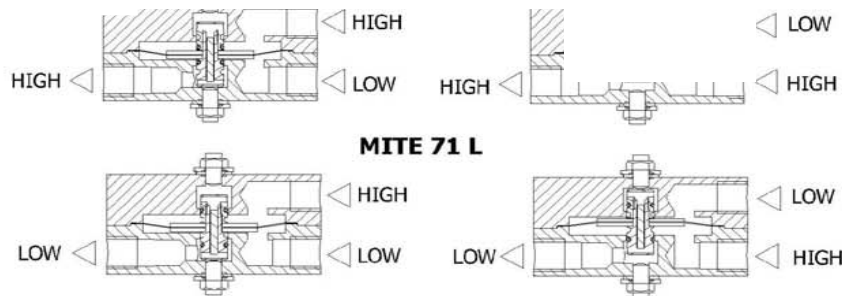
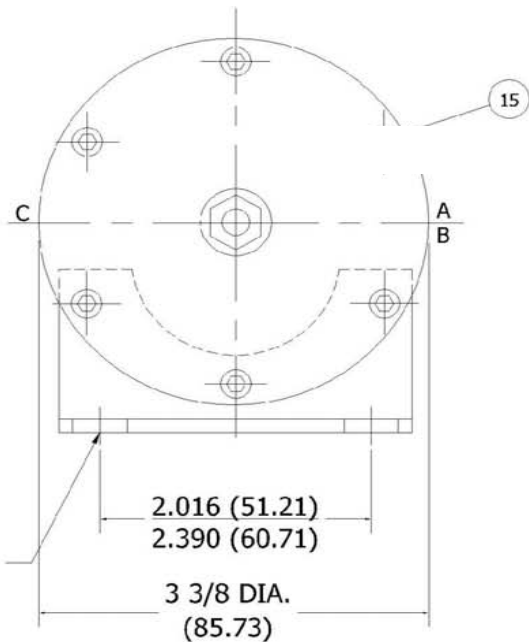
B. To convert unit to “LOW” settings:

1. Remove 6 cap screws. Separate upper and lower cases.
2. Place the two O-rings, one on either side of diaphragm, into the outside grooves away from the diaphragm. Reassemble.
3. Apply pressure, not over 5 psig, to port “A”. Tighten adjusting screw on side “B” until port “B” and/or “C” starts to leak. Then loosen adjusting screw slowly until leakage stops.
4. Apply not over 5 psig to port “B”. Tighten adjusting screw on side “A” until port “A” and/or “C” starts to leak. Then loosen adjusting screw slowly until leakage stops.

LIMITED WARRANTY & DISCLAIMER

ControlAir LLC products are warranted to be free from defects in materials and workmanship for a period of eighteen months from the date of sale, provided said products are used according to ControlAir LLC recommended usages. ControlAir LLC's liability is limited to the repair, purchase price refund, or replacement in kind, at ControlAir LLC's sole option, of any products proved defective. ControlAir LLC reserves the right to discontinue manufacture of any products or change products materials, designs or specifications without notice. Note: ControlAir does not assume responsibility for the selection, use, or maintenance of any product. Responsibility for the proper selection, use, and maintenance of any ControlAir product remains solely with the purchaser and end user.

FLOW SCHEMATIC



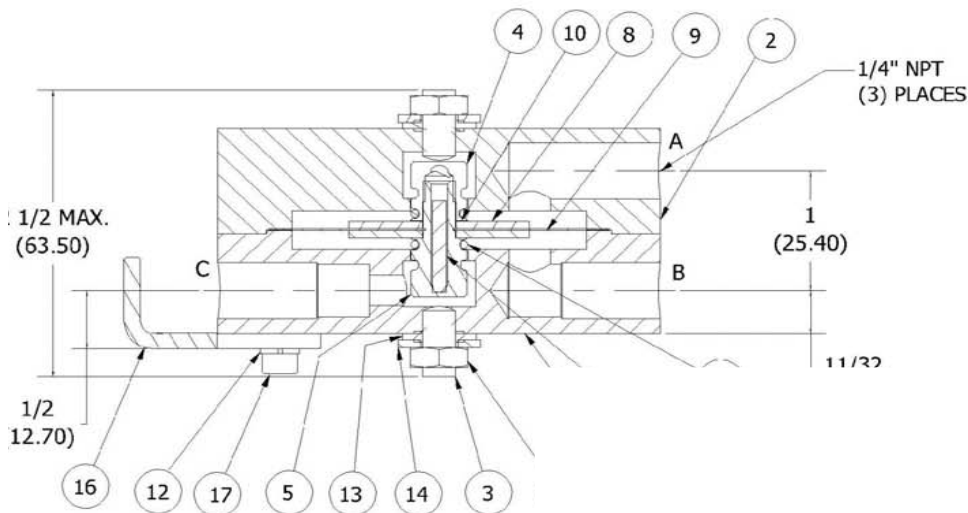
NOTES:

1. PRESSURE RATING: 100 PSIG (689 KPa)
2. TEMPERATURE RATING:
-40° F TO 180° F (-40° C TO 82.2° C)

*** RECOMENDED SPARE PARTS**

| | | Parts List | |
|-----|----|-------------|----------------------|
| | ER | | DESCRIPTIO |
| 1 | 1 | 742-714-028 | UPPER COVER |
| | | 742-714-026 | LOWER COVER |
| | | 748-179 | HEX SOCKET SET SCREW |
| 4 | 1 | 742-907-002 | SPOOL |
| 5 | 1 | 742-907-004 | SPOOL ADAPTOR |
| 6 | 2 | 745-749-061 | O-RING |
| 7 | 1 | | PIN |
| 8 | 2 | | DISC |
| 9* | 1 | 746-700-059 | DIAPHRAGM |
| 10* | 1 | 746-724-024 | GASKET |
| 11 | 2 | 745-734-059 | LOCK NUT |
| 12 | 2 | 746-755-136 | LOCK WASHER |
| 13 | 2 | 745-762-067 | SEALING WASHER |
| 14 | 2 | 745-762-066 | PLAIN WASHER |
| 15 | 4 | 745-748-177 | CAP SCREW 1" |
| 16 | 1 | 736-707-059 | BRACKET |
| 17 | 2 | 745-748-178 | CAP SCREW 1.25" |

THIS DRAWING AND THE INFORMATION IT DISCLOSES ARE CONFIDENTIAL PROPERTY OF CONTROLAIR INC. AND MAY NOT BE REPRODUCED OR TRANSMITTED IN ANY FORM OR BY ANY MEANS, ELECTRONIC OR MECHANICAL, INCLUDING PHOTOCOPYING, RECORDING, OR BY ANY INFORMATION STORAGE AND RETRIEVAL SYSTEM, WITHOUT THE WRITTEN AUTHORIZATION OF CONTROLAIR INC.



ControlAir Inc. 8 COLUMBIA DRIVE
ANNISTON, AL 35611 USA

DIAPHRAGM OPERATION

MITE 71

| | | | | |
|----------|-----|--------------------|------------------|-------------|
| DRAWN BY | JAG | SCALE | MATERIAL | SEE NOTES |
| CHECKED | | DATE | 05-14-13 | DRAWING NO. |
| TRACED | | APPROVED DAHL REF: | 9071-02-0000-500 | 741-622-070 |