



# Type 750V Vacuum Regulator

For systems that require system pressure control above and below atmospheric pressure

The Type 750V is designed to incorporate a fixed negative 15 PSIG bias spring to maintain vacuum outputs up to 29" Hg and an adjustable opposing range spring that increases controlled pressure outputs up to 150 PSIG. Stability of output pressure droop is minimized by use of an aspirator tube which adjusts the air supply in accordance with the flow velocity.

## Features

- **1/4", 3/8", 1/2" NPT/BSPP Porting**
- **Versatile**  
A single unit can control pressures from 29" Hg vacuum to 150 psig.
- **Sensitive**  
Senses output pressure deviations to within 1/2 inch water column pressure
- **Stable Output**  
Dampening action of aspirator tube makes this regulator insensitive to changes in flow
- **On-line Maintenance**  
Can be serviced without removal from air line

## Specifications

<b>Flow Capacity</b>	2.5 scfm (71 NI/min) @ 29 Hg Vac. (740mm Hg) 40 scfm (1,132 NI/min) @ 100 PSIG (6.9 bar) supply, 20 psig (1.4 bar) output
<b>Exhaust Capacity</b>	4 scfm (120 NI/min) [downstream pressure 5 psi (.35 bar) above set pressure]
<b>Sensitivity</b>	1/2" (12.7 mm) water
<b>Effect of Supply Pressure Variation on Output</b>	Less than 0.1 psi (0.01 bar) for 25 psi (1.7 bar) change
<b>Supply Pressure</b>	250 psig (17.5 bar) Maximum
<b>Operating Temperature</b>	-40°F to 200°(-40°C to 93.3°C)
<b>Weight</b>	1 lb, 15 oz (.88 kg)
<b>Mounting</b>	Pipe, panel, or bracket
<b>Port Sizes</b>	Inlet/Outlet: 1/4", 3/8" or 1/2" NPT/BSPP Gauge (2): 1/4" NPT/BSPP
<b>Output Pressure Ranges</b>	Vacuum to 2 psi (-1 to 0.15 bar), Vacuum to 15 psi (-1 to 1 bar), Vacuum to 30 psi (-1 to 2 bar), Vacuum to 60 psi (-1 to 4 bar), Vacuum to 100 psi (-1 to 7 bar), Vacuum to 150 psi (-1 to 10 bar)

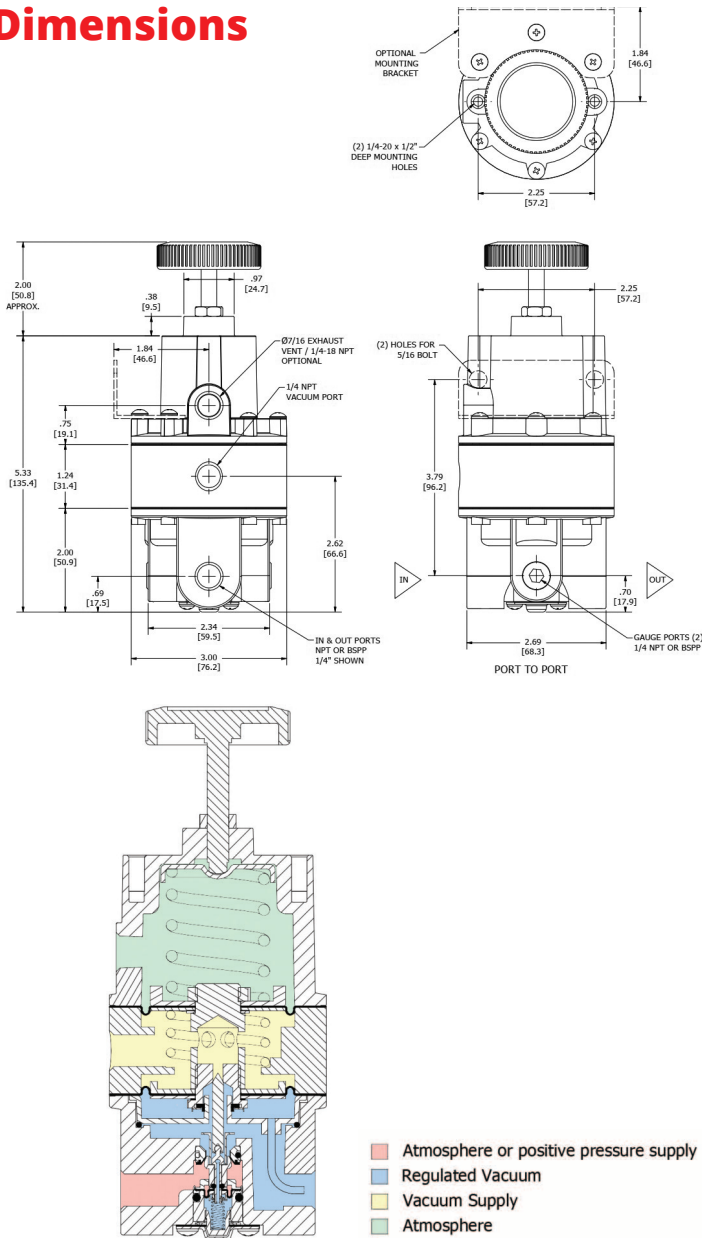
## Materials of Construction

<b>Body</b>	Diecast aluminum alloy
<b>Internal Components</b>	Stainless steel, brass, plated steel, acetal
<b>Diaphragm</b>	Buna-N elastomer, polyester fabric
<b>Knob</b>	Phenolic plastic
<b>Spring</b>	Music Wire

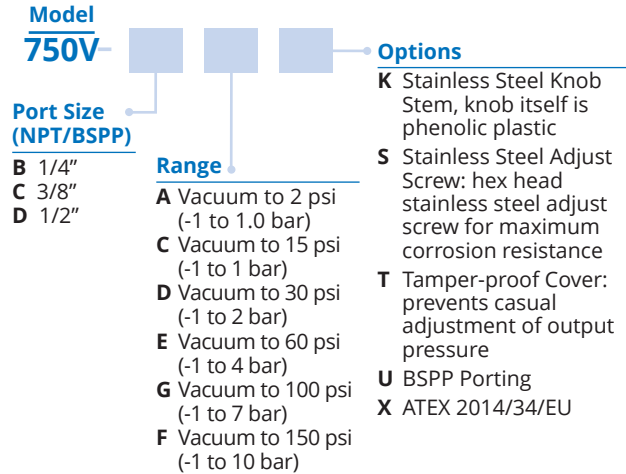


# Type 750V Vacuum Regulator

## Dimensions



## Ordering Use this coding system to order



## Accessories

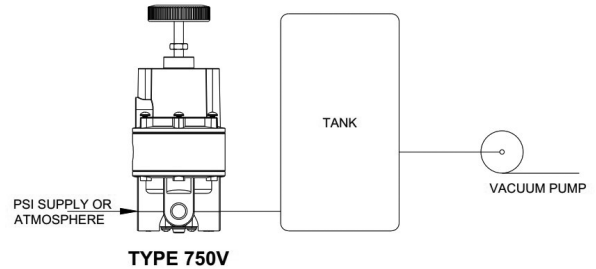
**Mounting Bracket (zinc plated steel):** P/N 446-707-025

**Gauges:** 1/4" NPT back mount, 2" face, dual scale

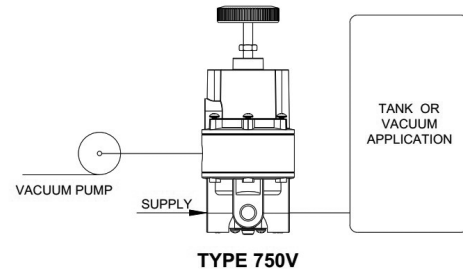
Range PSI (bar)	Part Number
Vacuum to 15 psig (-1 to 1 bar)	446725042
Vacuum to 30 psig (-1 to 2 bar)	446725043
Vacuum to 60 psig (-1 to 4 bar)	446725044
Vacuum to 150 psig (-1 to 10 bar)	446725045

## Typical Installations

**Fig 1.** For applications when rapid evacuations of a tank or vacuum system is required. The vacuum capacity of the pump is normally greater than that of the Type 750V.



**Fig 2.** For more conventional applications. The Type 750V will provide precise control of the vacuum level at the tank or application.



**Warranty** ControlAir LLC products are warranted to be free from defects in materials and workmanship for a period of eighteen months from the date of sale, provided said products are used according to ControlAir LLC recommended usages. ControlAir LLC's liability is limited to the repair, purchase price refund, or replacement in kind, at ControlAir LLC's sole option, of any products proved defective. ControlAir LLC reserves the right to discontinue manufacture of any products or change products materials, designs or specifications without notice. Note: ControlAir does not assume responsibility for the selection, use, or maintenance of any product. Responsibility for the proper selection, use, and maintenance of any ControlAir product remains solely with the purchaser and end user. Drawing downloads available at [www.controlair.com](http://www.controlair.com)



8 Columbia Drive / Amherst, NH 03031 USA / [www.controlair.com](http://www.controlair.com) / [sales@controlair.com](mailto:sales@controlair.com) / 603-886-9400 / FAX 603-889-1844

An ISO 9001:2015 Registered Company

P/N 441-625-086 3/4/26