



# Type 715BP

## Precision, Signal Operated, Back Pressure Regulator

The Type 715BP Signal Operated Back Pressure Regulator is a 1:1 signal to output ratio regulator that is high flow and a highly accurate relief valve. It is a normally closed valve that will remain closed until the upstream pressure at the inlet exceeds the signal pressure. When upstream pressure does exceed the signal pressure, the valve will open and flow air until upstream pressure decreases to below the signal pressure. It can also be used as a flow controller. Varying the signal pressure, usually with an I/P transducer, will increase or decrease the amount of air allowed to flow from upstream to downstream.

### Features

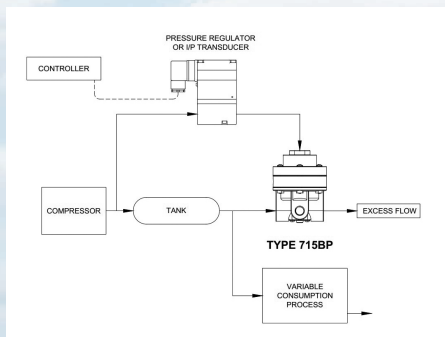
- Sensitivity**  
 Provides quick response to controlled system pressure variation
- High Flow Capacity**  
 Flows up to 90 SCFM (depending on set point pressure and port size).
- Quiet Performance**  
 A separate control chamber isolates the diaphragm from the flow path, preventing hunting and vibration.
- On-Line Maintenance**  
 Unit can be disassembled and serviced without removing from the air line.

### Specifications

<b>Flow Capacity</b>	Up to 90 SCFM (2,548 NI/min)
<b>Cv</b>	1/4 NPT: 1.5, 3/8 and 1/2: 2.0
<b>Maximum System Pressure</b>	250 psig (17.25 bar)
<b>Maximum Signal Pressure</b>	150 psig (10 bar)
<b>Ambient Temperature</b>	0°F to 150°F (-18°C to 66°C)
<b>Weight</b>	1.20 lbs (.54 kg)
<b>Materials of Construction</b>	Body; diecast aluminum alloy, baked enamel finish. Trim; acetal, brass, and plated steel.
<b>Sensitivity</b>	1/4" (6.4 mm water)
<b>Port Sizing</b>	Inlet/Outlet 1/4", 3/8", or 1/2" NPT/BSPP Gauge (2) 1/4" NPT/BSPP
<b>Ratio Accuracy</b>	1.0 % of a 100 psig (7.0 bar) Signal Span

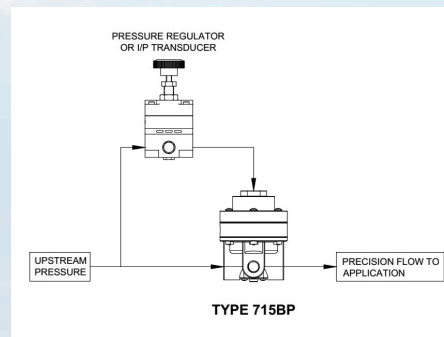


### Over Pressurization Protection



The Type 715BP relay can be controlled by a manual pressure regulator or I/P transducer to provide protection against over pressurization in the downstream portion of a pneumatic system.

### Flow Controller

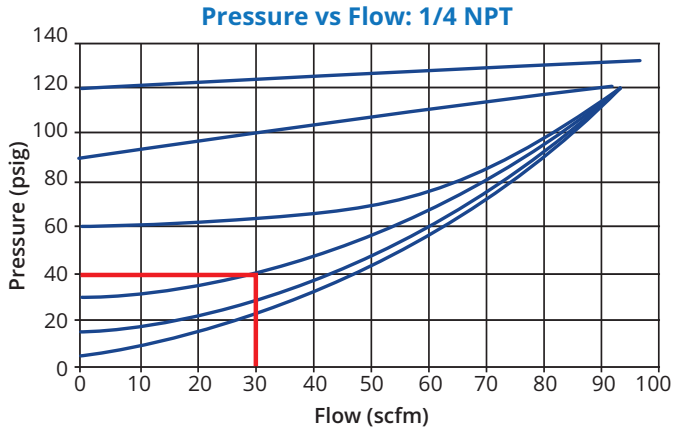


The Type 715BP relay can be controlled by a manual pressure regulator or I/P transducer to provide precision flow to a downstream application.



# Type 715BP Precision, Signal Operated, Back Pressure Regulator

## Flow Characteristics



**Relief Capacity Example:** A Type 715BP has a signal pressure of 30 psig. As upstream pressure exceeds 30 psig, the relief valve will open and allow excess pressure to flow downstream. If upstream pressure were to reach 40 psig, the Type 715BP would flow at a rate of 30 scfm.

## Ordering Use this coding system to order

### Model

**715**

### Port Size (NPT/BSPP)

- B 1/4"
- C 3/8"
- D 1/2"

### Ratio

A 1:1

### Options

- U BSPP Porting
- X ATEX 2014/34/EU

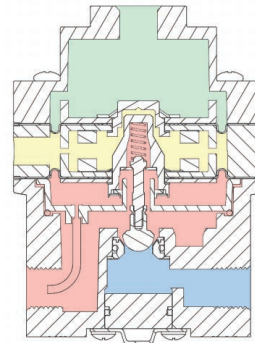
## Accessories

**Mounting Bracket (zinc plated steel):** P/N 446-707-025

**Gauges:** 1/4" NPT back mount, 2" face, dual scale

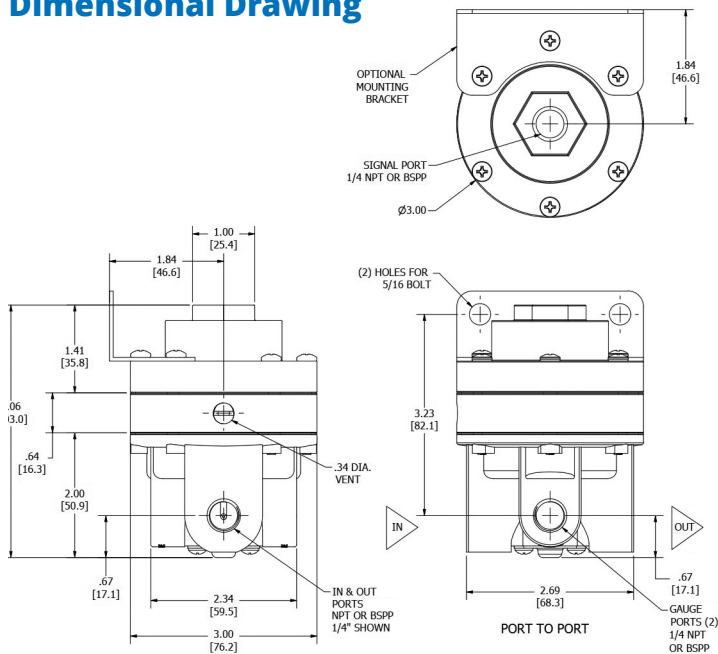
- |                             |                 |
|-----------------------------|-----------------|
| Range: 0-15 psi (0-1 bar)   | P/N 446-725-003 |
| Range: 0-30 psi (0-2.1 bar) | P/N 446-725-004 |
| Range: 0-60 psi (0-4.1 bar) | P/N 446-725-001 |
| Range: 0-160 psi (0-11 bar) | P/N 446-725-002 |

## Principles of Operation



- Upstream Pressure
- Atmospheric Pressure
- Signal Pressure
- Downstream Pressure

## Dimensional Drawing



**Warranty** ControlAir LLC products are warranted to be free from defects in materials and workmanship for a period of eighteen months from the date of sale, provided said products are used according to ControlAir LLC recommended usages. ControlAir LLC's liability is limited to the repair, purchase price refund, or replacement in kind, at ControlAir LLC's sole option, of any products proved defective. ControlAir LLC reserves the right to discontinue manufacture of any products or change products materials, designs or specifications without notice. Note: ControlAir does not assume responsibility for the selection, use, or maintenance of any product. Responsibility for the proper selection, use, and maintenance of any ControlAir product remains solely with the purchaser and end user. Drawing downloads available at [www.controlair.com](http://www.controlair.com)



8 Columbia Drive / Amherst, NH 03031 USA / [www.controlair.com](http://www.controlair.com)  
[sales@controlair.com](mailto:sales@controlair.com) / 603-886-9400 / FAX 603-889-1844

An ISO 9001:2015 Registered Company



P/N 441-625-087 5/7/26