



Type 380/390SS

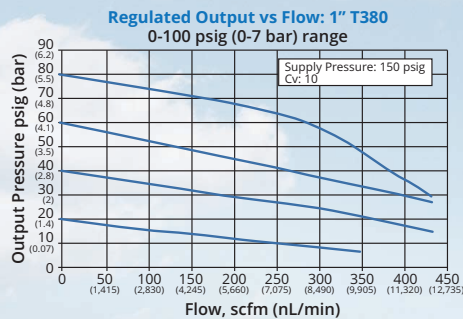
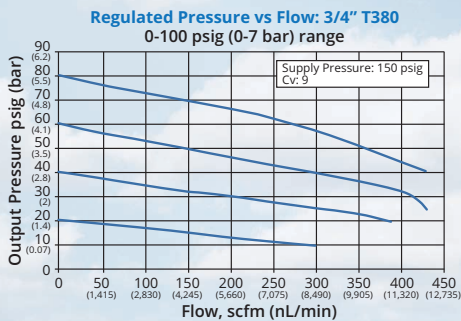
Large Flow Capacity Stainless Steel Filter Regulator and Regulator

Type-380SS Stainless Steel Filter Regulator
Type-390SS Stainless Steel Regulator

The Type 380/390SS stainless steel filter regulator series is designed for demanding applications that require stable, accurate pressure regulation and high flow capacity. Corrosion resistant 316L stainless steel housing, trim and filter assemblies make this series adaptable to offshore and other harsh environments. Large porting ensures stable and repeatable output pressures, even during wide supply pressure variations from large volume valve actuators. Oversized valving helps the units achieve high flow rates with minimal pressure drop.

Features

- All 316L Stainless Steel Construction
- High Flow Capacity
- 3/4" or 1" NPT Porting
- 2 Gauge Ports
- Automatic Drain Option
- Soft Seat Self Relieving Design
- Low Temperature Option

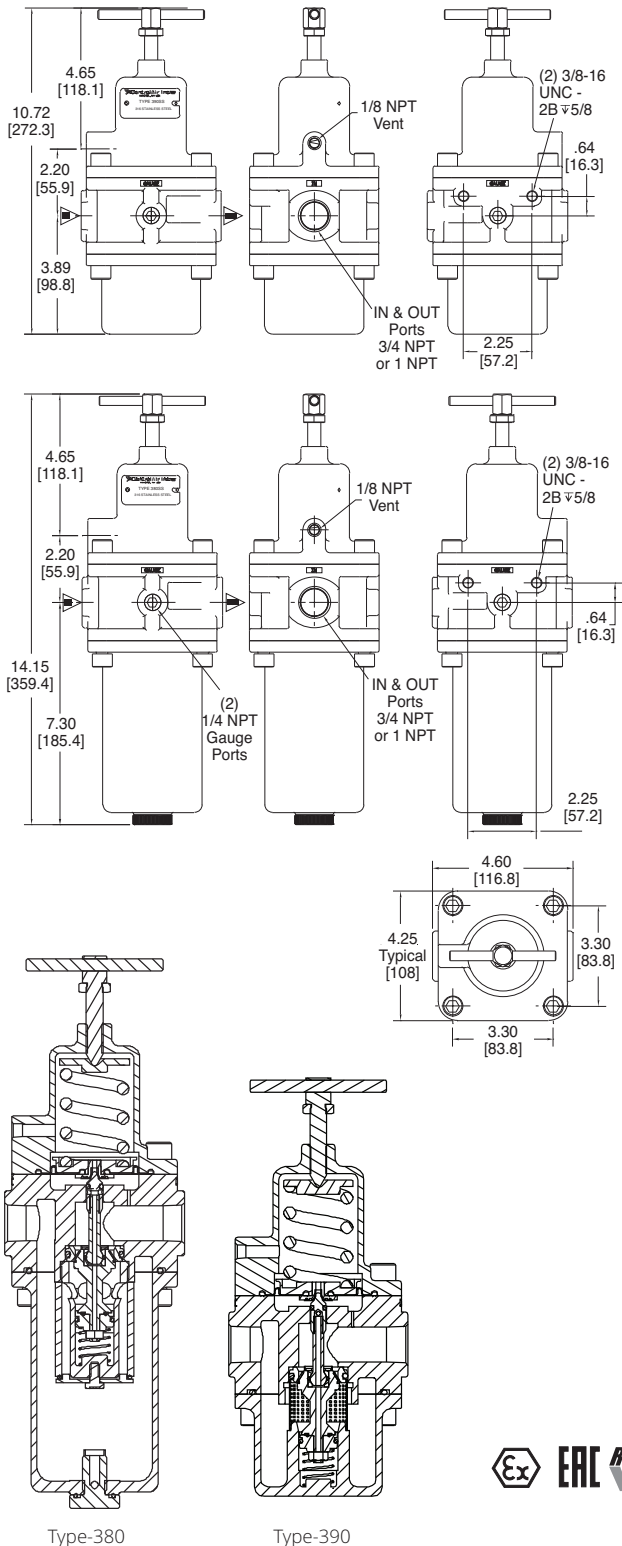


Type 380SS

Type 390SS

Type 380/390SS Clean, stable performance for tough, dirty process control

Dimensions



Specifications

| | |
|---|--|
| Output Range psig (bar) | 0-30 (0-2), 0-60 (0-4), 0-100 (0-7), 0-150 (0-10), 0-200 (0-14) |
| Maximum Supply Pressure | 290 psig (20.0 BAR) Autodrain: 150 psig (10 BAR) |
| Maximum Flow Coefficients (Cv) | 3/4": 9.0 1": 10.0 |
| Exhaust Capacity | 2.0scfm (56.5 NL/min), downstream pressure 10 psig (0.7 bar) above set point |
| Air Consumption | 4 scfh (2 NL/min) maximum |
| Operating Temperatures | -40°F to +200°F (-40°C to +93°C) Autodrain: 32°F to 200°F (0° to 93°C) Low Temperature: -61°F to +194°F (-52°C to +90°C) |
| Operating Media | Air, inert gas, sweet (natural gas) |
| Porting | Inlet/Outlet: 3/4" NPT or 1" NPT Gauge (2): 1/4" NPT Exhaust: 1/8" NPT |
| Filtration | Type-380: 40 micron standard or 5 micron option Type-390: N/A |
| Weight | Type-380: 16.6 lbs (7.5 kg) Type-390: 14.5 lbs (6.6 kg) |
| Materials | 316L stainless steel: body, bonnet, filter Nitrile: diaphragm, seals Inconel: valve spring |

Ordering Use this coding system to order

| | | |
|--|--|--|
| Model 380 Filter Regulator | | Options |
| Model 390 Regulator | | A Automatic Drain (Type-380)* F 5 micron filter L Low Temperature Operation N Non Relieving R EAC TR-CU X ATEX 94/9/EC Approval II 2 GD |
| Port Size NPT | Range | |
| E 3/4" F 1" | A 0-30 psi (0-2 BAR) B 0-60 psi (0-2 BAR) C 0-100 psi (0-7 BAR) D 0-150 psi (0-10 BAR) E 0-200 psi (0-14 BAR) | * Not available with "E" range |

| Accessories | Part Number |
|--|--------------------------|
| 1/8" NPT Exhaust Screen Fitting | 445-761-005 |
| Gauge | Range psi (BAR) |
| | 0-30 (0-2) 445-725-019 |
| | 0-60 (0-4) 445-725-020 |
| | 0-160 (0-10) 445-725-021 |

Warranty ControlAir, LLC products are warranted to be free from defects in materials and workmanship for a period of eighteen months from the date of sale, provided said products are used according to ControlAir, LLC recommended usages. ControlAir, LLC's liability is limited to the repair, purchase price refund, or replacement in kind, at ControlAir, LLC's sole option, of any products proved defective. ControlAir, LLC reserves the right to discontinue manufacture of any products or change products materials, designs or specifications without notice. Note: ControlAir does not assume responsibility for the selection, use, or maintenance of any product. Responsibility for the proper selection, use, and maintenance of any ControlAir product remains solely with the purchaser and end user. Drawing downloads available at www.controlair.com

